

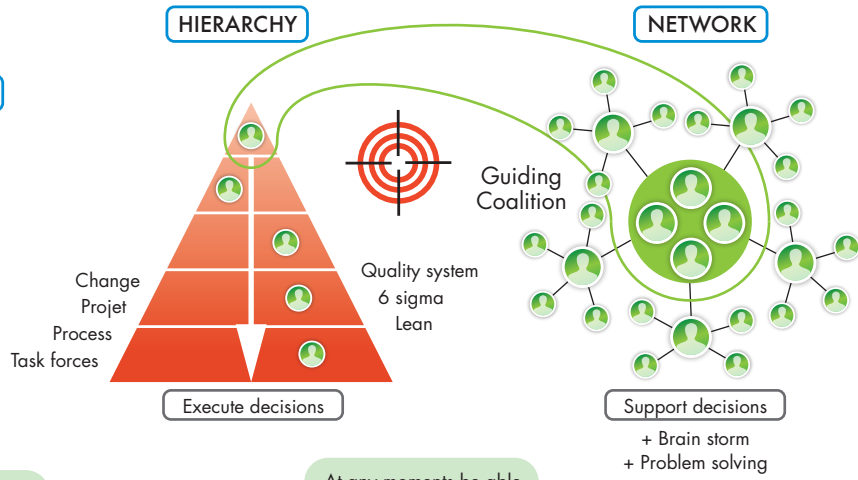
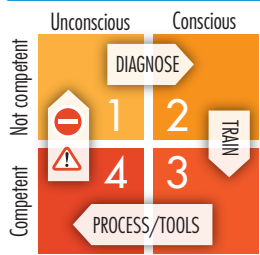
ORGANIZATION DEVELOPMENT



Implementation

TIME : Speed - Productivity - Synchronization - Short, mid and long term / COMPLIANCE: Commitment - Respect Standards

MANAGE KNOWLEDGE



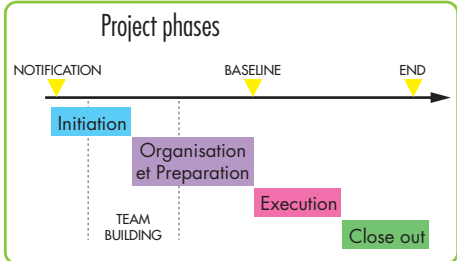
INDIVIDUAL COMPETENCIES

COMMUNITIES

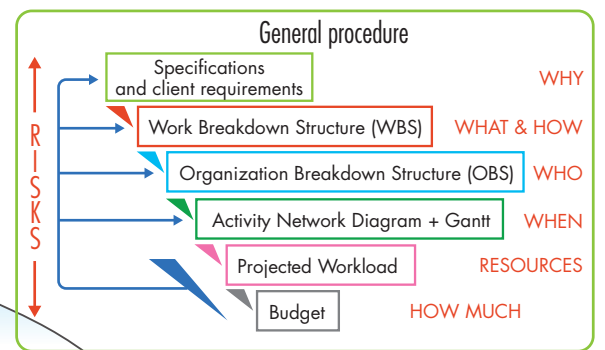
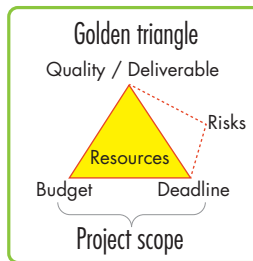


RETEX Fast changing world

NETWORK/SHARE/TRANSPARENCY



PROJECT



PROJECT MANAGEMENT OFFICE

PROJECT ROLES



The less you discuss and the more decisions are taken at the lowest level

- Efficiency
- Mechanization - Gesture
- Calculation - Decision
- Pool resources
- Mutualize risk
- Automatization
- Precision

- Power
- Expertize
- Volume effect
- Sustainability
- Alignment
- Externalize
- Internalize

SPECIALIZE

- Danger
- Analyze - Paralyze
- Specialize - Sterilize
- Vulnerable to cycles
- Multiskills required
- Cash consuming

- Keep and develop knowledge
- Train people
- Transmit knowledge
- Make knowledge available
- Compliance to standards
- Technical watch

FLEXIBILITY

RETEX

AGILITY/EMPOWERMENT

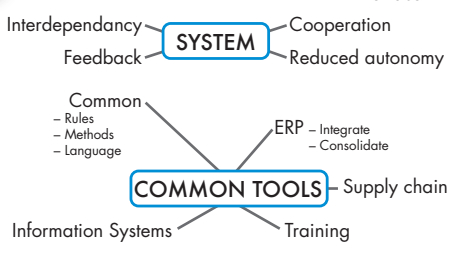
RISK

PRODUCTIVITY

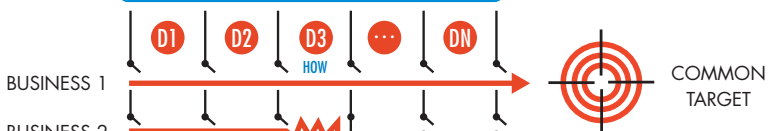
1000

PROCESS

SPECIALITY DRIVEN ORGNIZATION

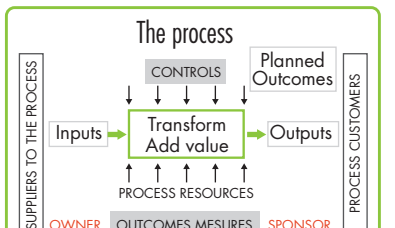


FLOW DRIVEN ORGANIZATION



COMPLEXITY

CONTRACT



Execution - Discipline

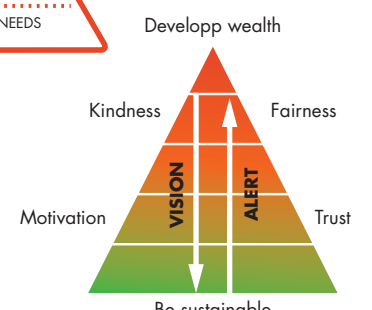
SPECIALIZE/CENTRALIZE

BASIC COMMUNITIES

- Constraint
- Necessity
- Chief
- Struggling for sustainability.
- Guild and Unions
- Subsidiarity
- Feudal/clans



HONOUR



Exemplarity

